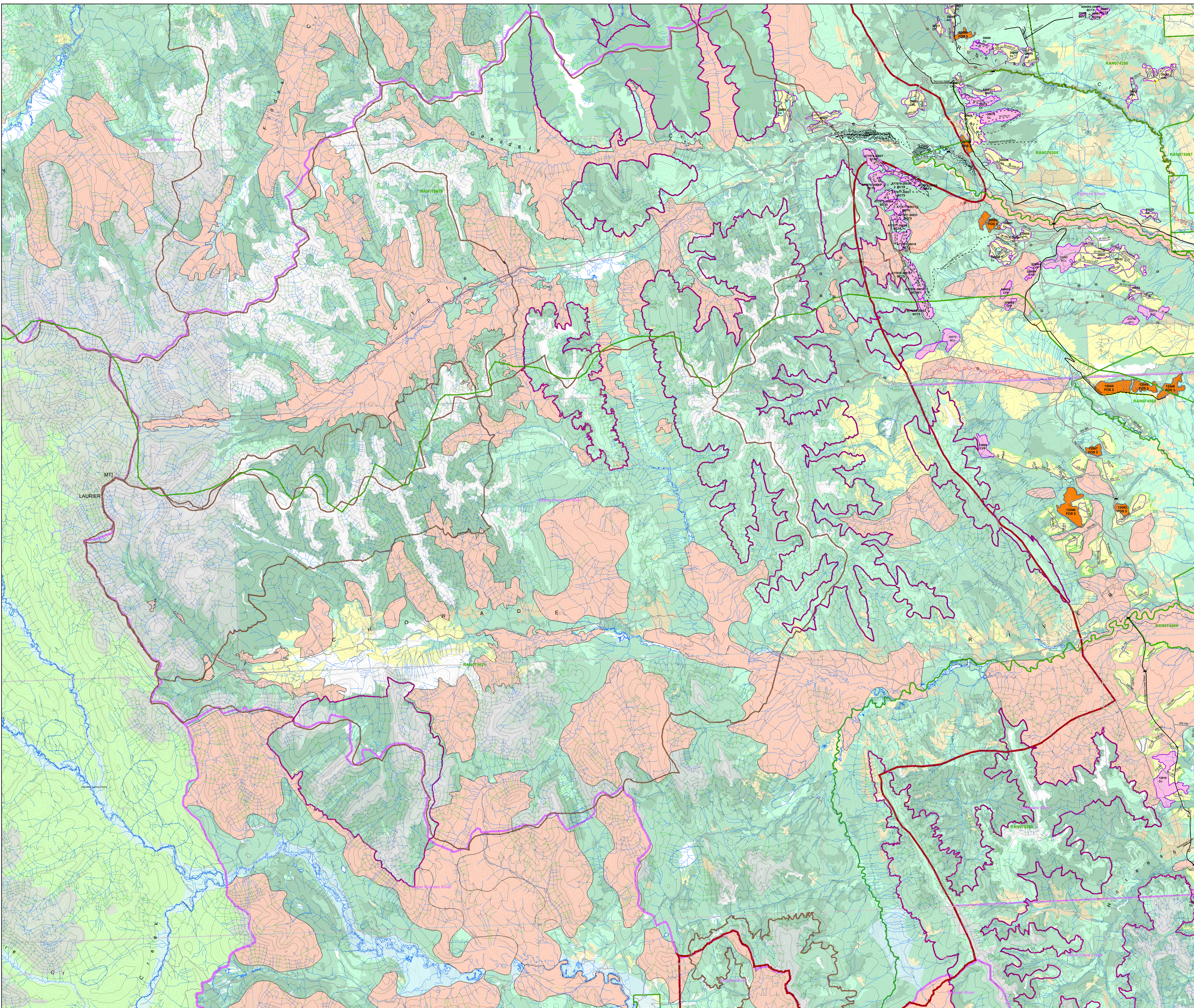
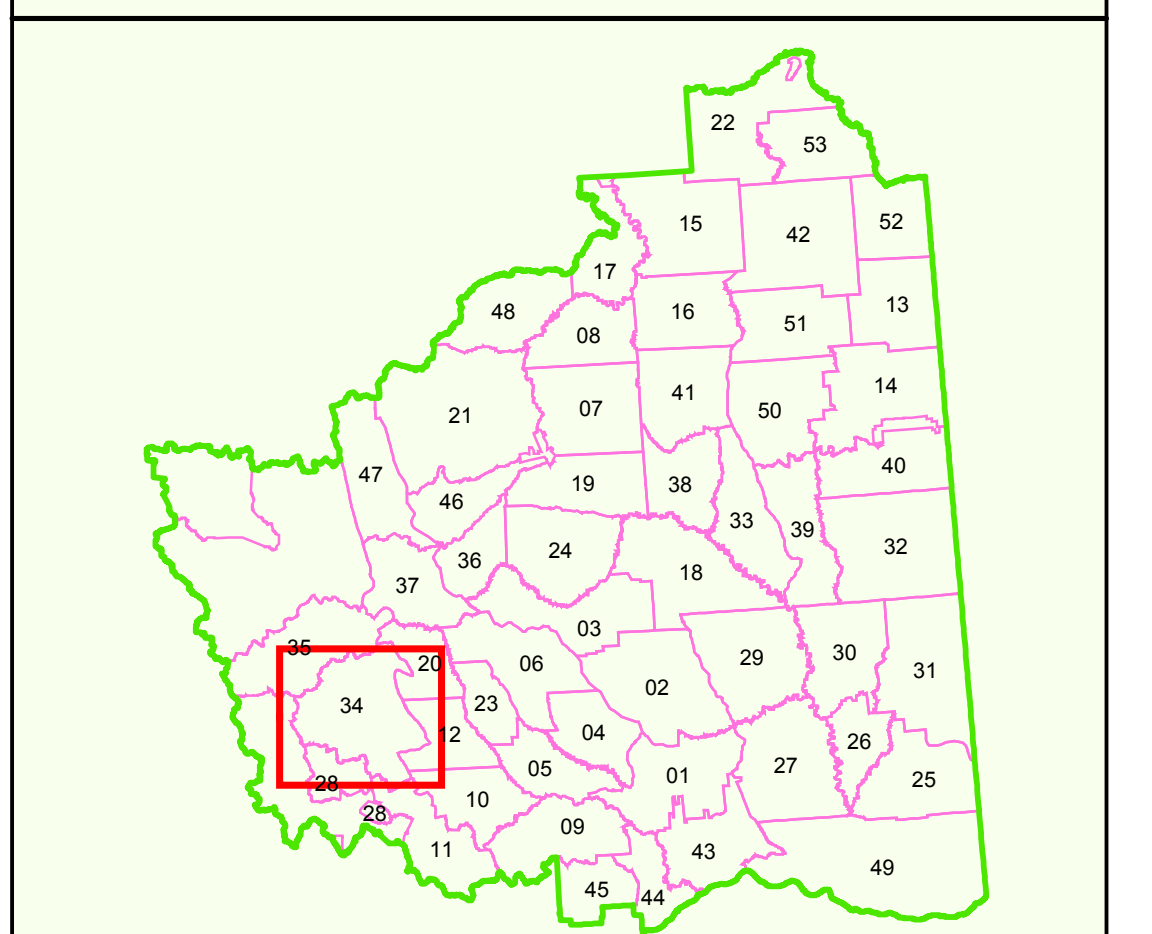


**Operating Area:**  
**# 34 - Upper Chowade River**



**Map Legend**

<p><b>Cutblocks</b></p> <ul style="list-style-type: none"> <li> FOS Proposed (2017)</li> <li> FOS Proposed (Carryover)</li> <li> Authorized</li> <li> Harvested</li> <li> Free Growing</li> <li> Wildlife Tree Patch / Reserve</li> </ul> <p><b>Ownership Codes</b></p> <ul style="list-style-type: none"> <li>BC (BC Timber Sales)</li> <li>BCS (Canadian Forest Products Ltd.)</li> <li>CS (Cameron River Logistics)</li> <li>CSL (Louisiana-Pacific Canada)</li> <li>LP (Louisiana-Pacific Canada)</li> <li>MPAC (Mackenzie Pulp Mill Corporation)</li> <li>PV (Peace Valley OSB)</li> </ul> <p><b>Tembec PA13 Blocks</b></p> <ul style="list-style-type: none"> <li> Proposed Block</li> <li> Harvested</li> <li> Free Growing</li> </ul> <p><b>Transportation / Utilities</b></p> <ul style="list-style-type: none"> <li> Highways</li> <li> Existing Roads</li> <li> Proposed Roads</li> <li> FOS Proposed Roads (2017)</li> <li> Deactivated Roads</li> <li> TRM II Roads / Digital Road Atlas</li> <li> OGC Roads</li> <li> Pipeline</li> <li> Railway</li> <li> Electricity Transmission Line</li> <li> Seismic Line</li> </ul> <p><b>Road Structures</b></p> <ul style="list-style-type: none"> <li> Gate</li> <li> Bridge</li> <li> Cattle Guard</li> </ul> <p><b>Hydrography</b></p> <ul style="list-style-type: none"> <li> Lakes, Rivers</li> <li> Wetlands</li> <li> Definite Stream</li> <li> Indefinite Stream</li> <li> Non-Fish, Query</li> <li> Non-Fish, Inventory</li> <li> Fish, Inventory</li> <li> Riparian Classification</li> </ul>	<p><b>Administrative</b></p> <ul style="list-style-type: none"> <li> BCGS Mapsheets</li> <li> Operating Area Boundaries</li> <li> Woodlot License Areas</li> <li> Private</li> <li> First Nations Reserve</li> <li> First Nations Claim Area</li> <li> Ecological Reserve, Park, Protected Areas</li> <li> Muskwa Kechika Boundary</li> <li> FOS Old Forest Management Area</li> <li> IRP Alpine Zone</li> <li> IRP Riparian Zone</li> <li> Major River Corridors</li> <li> Range Tenures</li> <li> Ungulate Winter Range</li> <li> Wildlife Habitat Area</li> <li> Scenic Areas</li> </ul> <p><b>Visual Quality Objective Codes</b></p> <ul style="list-style-type: none"> <li>P (Preservation)</li> <li>PR (Partial Retention)</li> <li>M (Modification)</li> <li>MM (Maximum Modification)</li> </ul> <p><b>Contours</b></p> <ul style="list-style-type: none"> <li> Index Contour</li> <li> Intermediate Contour</li> <li> Cliff</li> </ul> <p><b>Recreation</b></p> <ul style="list-style-type: none"> <li> Recreation Site</li> <li> Recreation Trail</li> <li> Recreation Reserves / Sites</li> </ul> <p><b>Seral Stage Theming</b></p> <ul style="list-style-type: none"> <li> &lt; 40 Coniferous / Deciduous</li> <li> 40 - 100 Coniferous</li> <li> 101 - 140 Coniferous</li> <li> 141+ Coniferous</li> <li> 40 - 100 Deciduous</li> <li> 101+ Deciduous</li> <li> Water</li> </ul>
--	---